



OVERVIEW

# EARTHQUAKES ACEH - PIDIE JAYA DECEMBER 7, 2016

ADRC STUDY VISIT TO THE AFFECTED AREAS BY THE  
KUMAMOTO EARTHQUAKES

19-20 DECEMBER 2016, KUMAMOTO, JAPAN

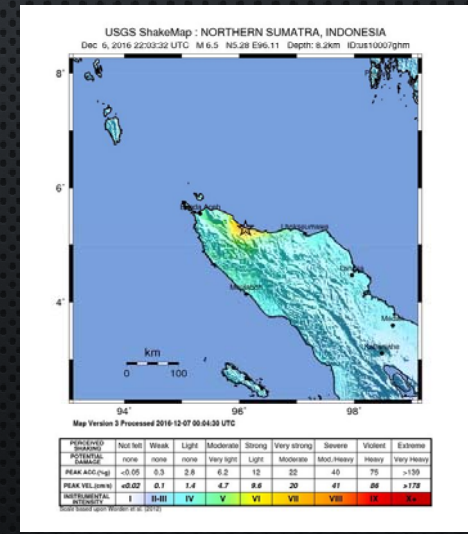
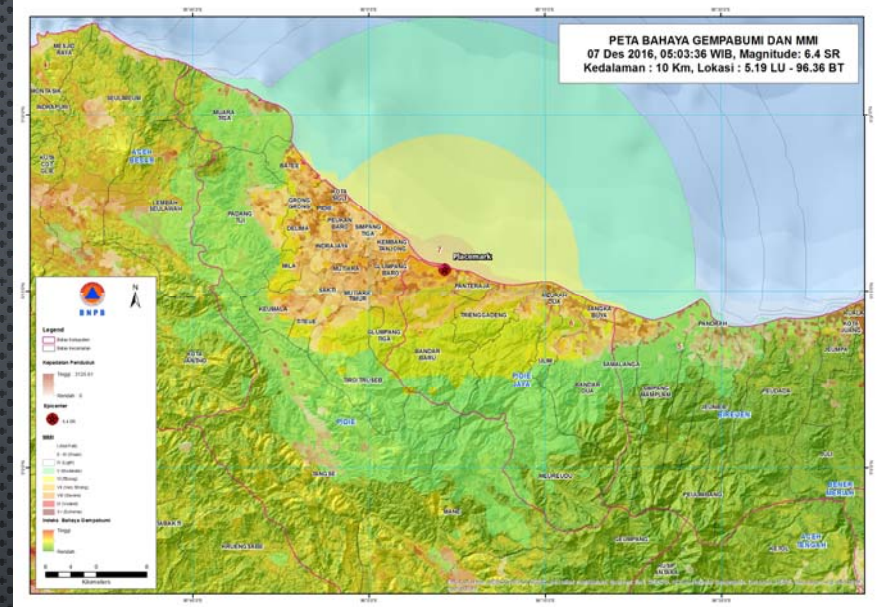




**DEPUTI BIDANG PENGINDERAAN JAUH  
LEMBAGA PENERBANGAN DAN ANTARIKSA NASIONAL**

Jl. Kailani No. 8, Pelayon, Pasar Rebo, Jakarta 13710, Indonesia  
Telp. 021-8710065, Faks. 021-8722733, E-mail: limgagpbencana@lapan.go.id, http://pwtarja.lapan.go.id

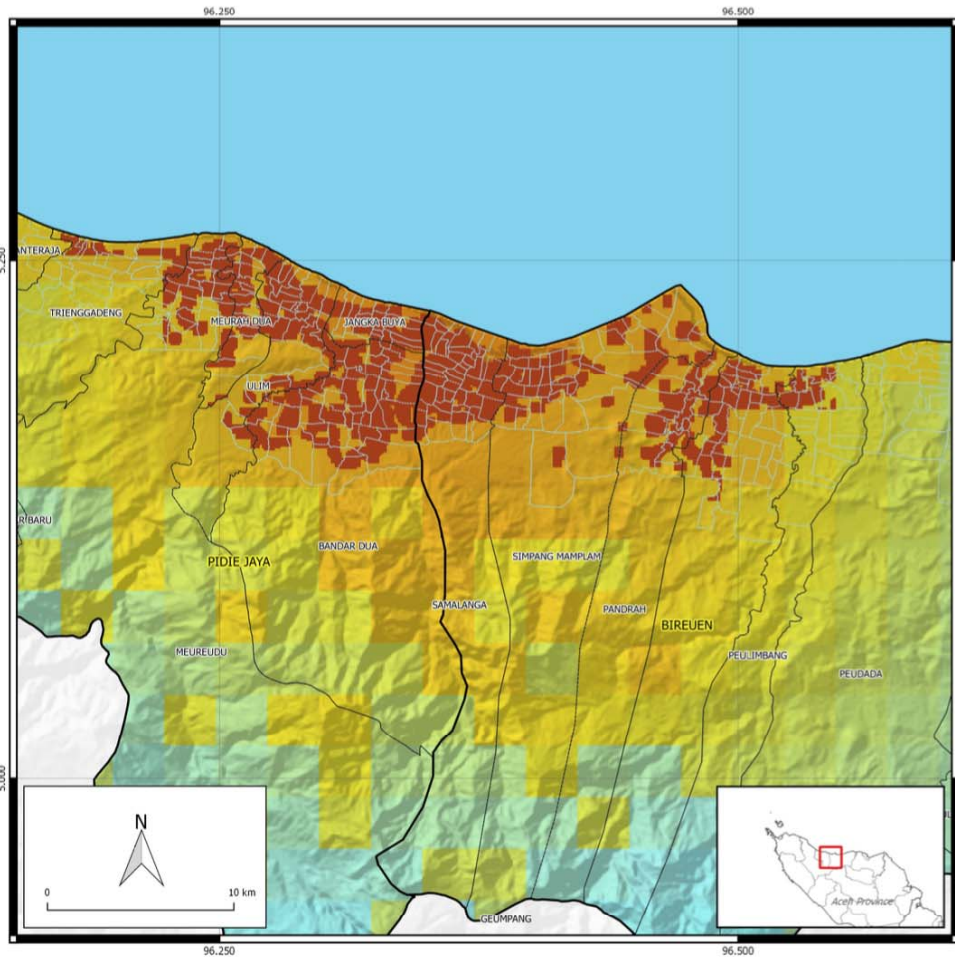
**INFORMASI WILAYAH BENCANA BERBASIS SATELIT  
KEJADIAN GEMPA BUMI TANGGAL 7 DESEMBER 2016  
KABUPATEN PIDIE JAYA DAN SEKITARNYA, PROVINSI ACEH**



On 7 December, 2016, an earthquake measuring 6.5 on the Richter scale shook the districts of Pidie Jaya, Aceh, Indonesia, at 5:03:36 pm West Indonesia Time. The epicenter was at coordinates 96.24 5.25 LU and BT, precisely on the ground at a distance of 18 kilometers southeast of Sigli, Pidie and 2 kilometers north Meureudu, Pidie Jaya, at a depth of 15 km.

- 104 HUMAN CASUALTIES, WHEREAS 96 HAVE BEEN IDENTIFIED;
- 780 PEOPLE ARE STILL INJURED;
- 86.417 PEOPLE ARE DISPLACED

*(AS OF 14 DEC, 17.00 WIB).*



### Legend

<b>MMI Level</b>	People Displaced	District Boundaries
II		Subdistrict Boundaries
III		Village Boundaries
IV		
V		
VI		
VII		
VIII		

NOTE: The extent and severity of the mapped event may not be consistent with the actual event. People are displaced if they experience and survive a shake level of more than MMI 6.  
The actual impact on people may differ from the analysis results due to limitations in the accuracy of the data, the analysis model and the behaviour of the local population.

### Analysis Results

**Table 1: Estimated number of displaced people**

Number of people displaced	173,000
Unaffected population	829,000
Total population in the analysis area	1,002,000

**Table 2: Minimum needs for displaced people**

<b>Relief items to be provided once</b>	<b>Total</b>
Toilets	8,600
<b>Relief items to be provided weekly</b>	<b>Total</b>
Rice [kg]	484,000
Drinking Water [l]	3,023,000
Clean Water [l]	11,573,000
Family Kits	34,500

### Analysis Information

Date	2016-12-15
Note	This assessment is a guide - we strongly recommend that you ground truth the results shown here before deploying resources and / or personnel.
Data Source	Hazard - BMKG data informed shakemap grid (Shake ID 20161207050336) Exposure - InaSAFE Indonesia Population Aggregation - BPS Administration
Software Version	QGIS 2.14.3 - InaSAFE 3.5.3
Analysis Model	ITB Bayesian Fatality Model
Spatial Reference	Minimum results are based on Perka BNPB No. 7/2008
Author	Geographic Coordinate, WGS84 Analysis is prepared by DIMInnovation



### Disclaimer

InaSAFE has been jointly developed by the Indonesian Government-BNPB, the Australian Government, the World Bank-GFDRR and independent contributors. These agencies and the individual software developers of InaSAFE take no responsibility for the correctness of outputs from InaSAFE or decisions derived as a consequence.

### InaSAFE Supporters



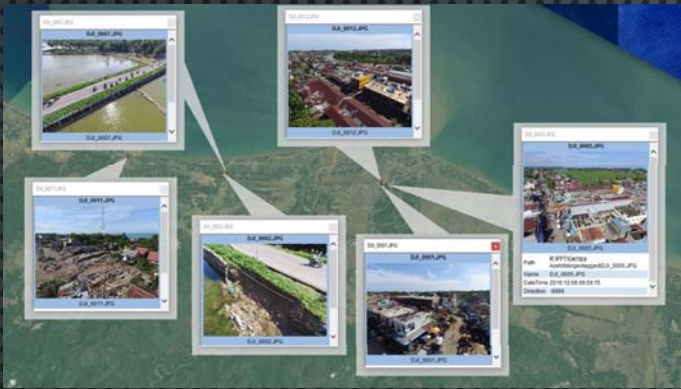
District	Total	Youth count	Adult count	Elderly count
BIREUEN	129,175	33,585	85,255	10,334
PIDIE JAYA	123,370	32,076	81,424	9,870
PIDIE	16,250	4,225	10,725	1,300
<b>TOTAL</b>	<b>268,795</b>	<b>69,886</b>	<b>177,404</b>	<b>21,504</b>

*Notes: Columns and rows containing only zeroes or "no data" values are excluded from the tables.*

District	Total	Female count (affected)	Weekly hygiene packs	Additional weekly rice kg for pregnant and lactating women
BIREUEN	129,175	64,587	51,263	6,019
PIDIE JAYA	123,370	61,685	48,960	5,748
PIDIE	16,250	8,125	6,449	757
<b>TOTAL</b>	<b>268,795</b>	<b>134,397</b>	<b>106,672</b>	<b>12,524</b>

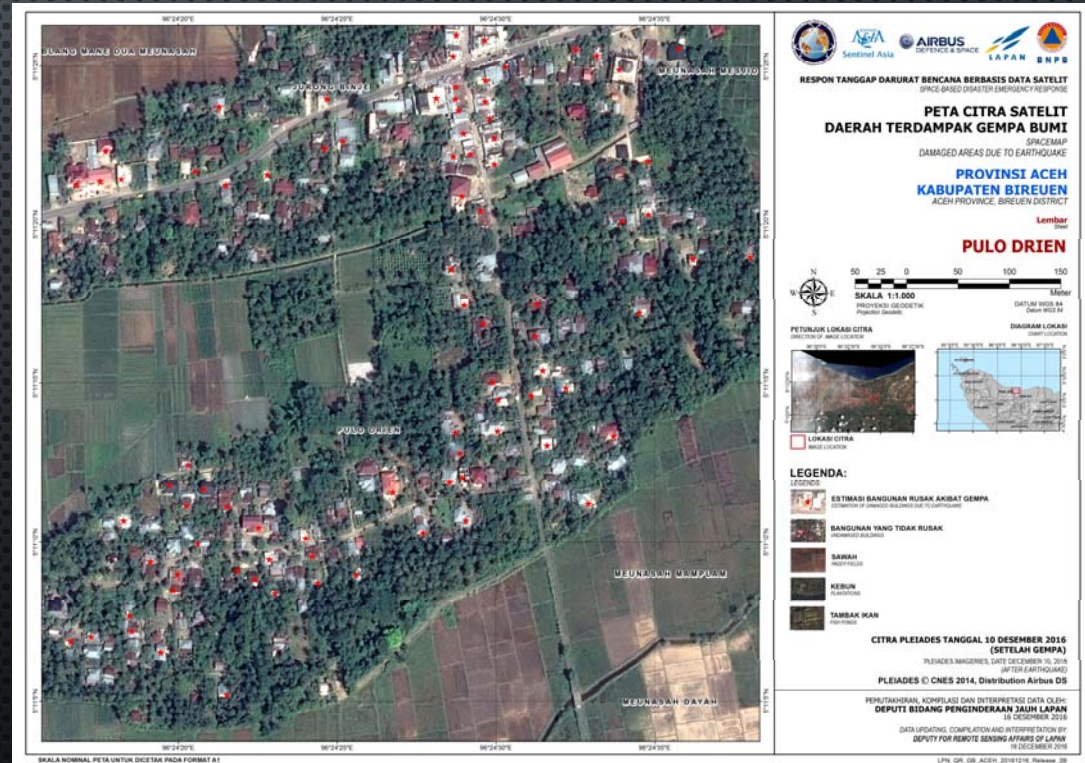
*Notes: Columns and rows containing only zeroes or "no data" values are excluded from the tables.*





Data is 16 238 houses were damaged while 2,536 units are severely damaged, 2,473 were damaged, and 11 329 with minor damage.

BNPB donate Rp. 40 million per home was severely damaged and Rp. 20 million per homes were damaged and light



# Thank You



Badan Nasional Penanggulangan Bencana  
Graha BNPB  
Jl. Pramuka Kav. 38, Jakarta 10120

Deputy for Prevention and Preparedness  
Ina-DRTG Building, PMPP/IPSC  
Jl. Anyar, Desa Tangkil, Kec. Citareup, Sentul – Kab. Bogor



Telp. : 021-3458400 – 021 29618877  
Fax. : 021-3458500 – 021 29618876  
Email : [contact@bnpb.go.id](mailto:contact@bnpb.go.id)  
Website : [www.bnpb.go.id](http://www.bnpb.go.id)  
Facebook : [www.facebook.com/bnpb.indonesia](http://www.facebook.com/bnpb.indonesia)  
Twitter : @BNPB\_Indonesia  
YouTube : BNPBIndonesia